



# FOSTEC

## INTELLIGENT MANAGEMENT 4.0

Compressed air is known to be one of the most expensive costs in your production. Multiple air compressors are being used to provide the compressed air to the production line. Most of the time, these Air Compressors are set to run in cascading order with different target pressure on each unit. This causes an unnecessary power consumption to the system.

**FOSTEC** Intelligent Management 4.0 or FIM 4.0 aims to prevent this situation from happening. The system unifies all compressors to a single working pressure without the need of cascading setup. The compressors are operated in order by FIM 4.0 to guarantee a stable pressure at the target point.

**FIM 4.0** offers multiple modes of energy savings. It is compatible with most, if not all, of the air compressors in the market.

### Why using FIM 4.0?

- Saves energy bills by automatically and intelligently controlling the air compressors.
- Averaging the operating hours of air compressors for better and more costs effective preventive maintenance schedule.
- Controls compressors from multiple locations.
- Maintains system pressure in a narrow band.
- Monitors system pressure in real-time for trending.
- Checks all the air compressors status and alarms through a free visualization software.
- Cloud monitoring and controlling (optional)

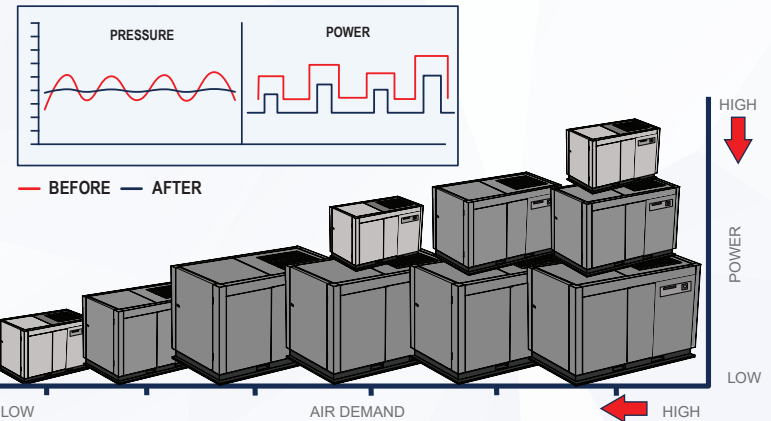
## ◆ MODES AND FEATURES

### Auto Target Pressure Mode

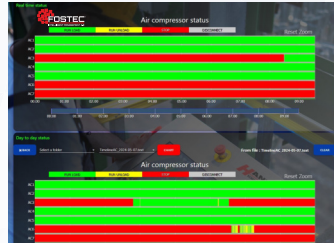
In this mode, FIM 4.0 takes control of the compressed air supply side by controlling the number of operating compressors based on the system air demand to make sure that the target pressure is efficiently and effectively achieved in Target Zone. Such options are available in this mode.

**Running Hours Focused** : FIM 4.0 will automatically arrange the order of the operation for your air compressors based on the compressor's running hours. This is aimed to averaging the operating hours of each compressor to better saving the preventive maintenance costs of the air compressors.

**Self-Arranging** : FIM 4.0 will control the air compressors based on the order that is manually arranged by the operator.



### Energy Saving Mode

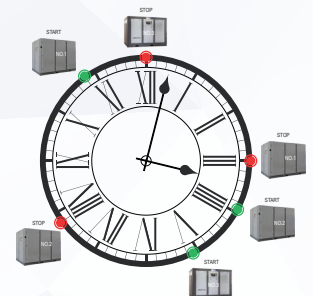


In this mode, FIM 4.0 learns the best pattern for each specific compressed air demand. FIM 4.0 will then choose to operate the lowest kW machines that suits the situation for the best efficiency of the compressed air system.

### Auto Timer Mode

In this mode, FIM 4.0 controls air compressors based on the operating schedule of each unit. You can set the operation date (Monday – Sunday) and time (24 hours format) for each compressor and the compressor will operate based on the set schedule.

For more information, visit [www.fostec-energy.com](http://www.fostec-energy.com)



Distributor :